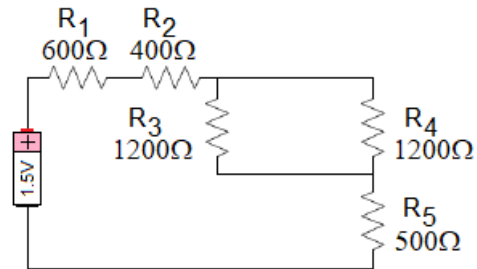


Electronics

Power

Problem 1.- In the circuit shown, which resistor dissipates the most power?



- (A) R_1
- (B) R_2
- (C) R_5
- (D) R_3 and R_4 are tied.
- (E) R_1 , R_3 and R_4 are tied.

Solution: The 1200-ohm resistors in parallel are equivalent to a 600-ohm resistor, but each one will only dissipate half of the power of the equivalent. Considering this equivalent 600ohm resistor, all resistors share the same current, then the largest one dissipates the most power. The answer is **(A)**.