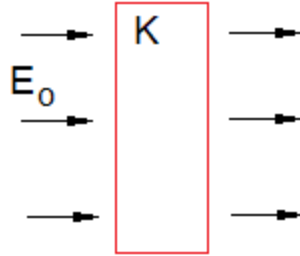


Physics II

Dielectrics

Problem 1.- A insulating material with a rectangular shape and dielectric constant K is placed inside an electric field of magnitude E_0 . What is the magnitude of the electric field inside the material?



- (A) $E = \frac{KE_0}{\epsilon_0}$ (B) $E = KE_0$ (C) $E = \frac{E_0}{K}$ (D) $E = E_0$ (E) $E = K\epsilon_0 E_0$